



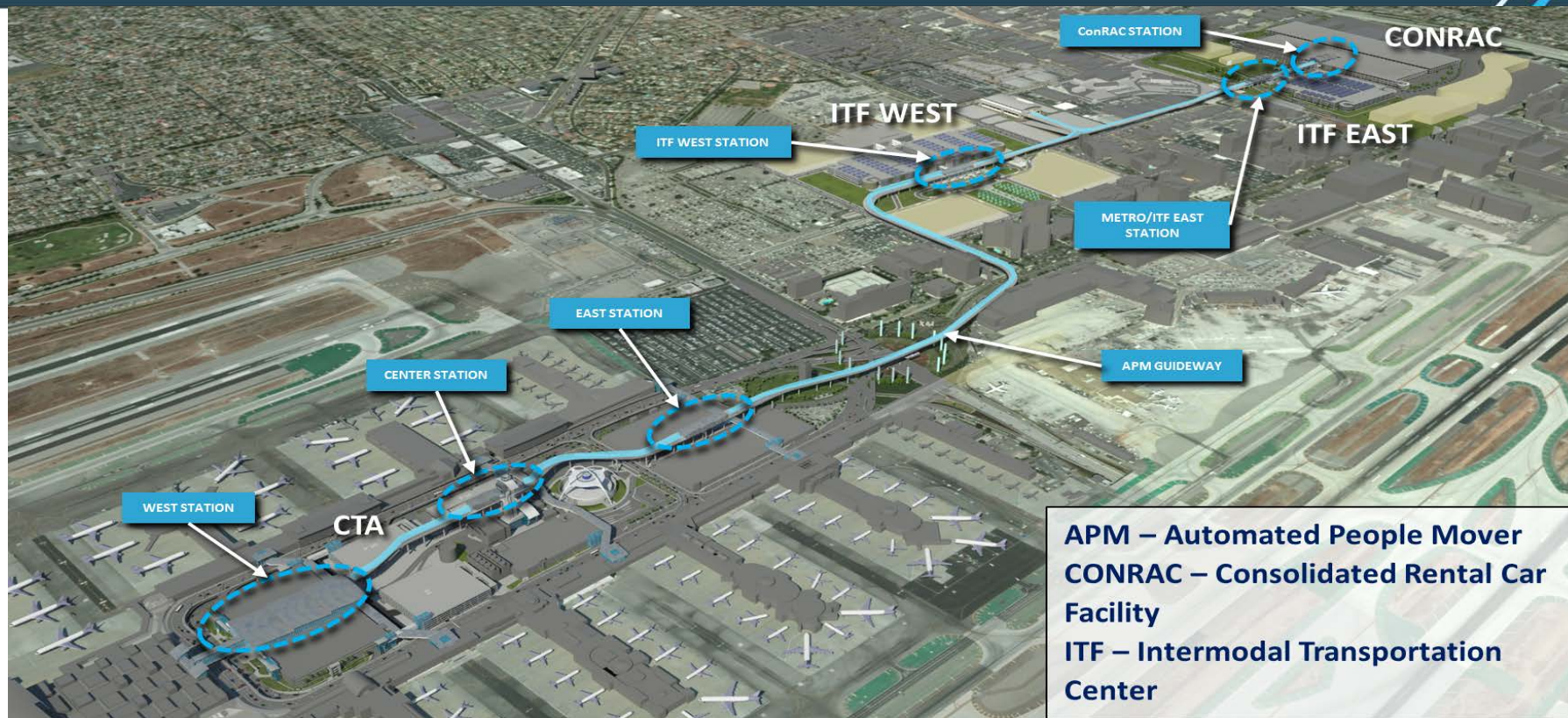
Landside Access Modernization Program Environmental Briefing

LAX Statistics

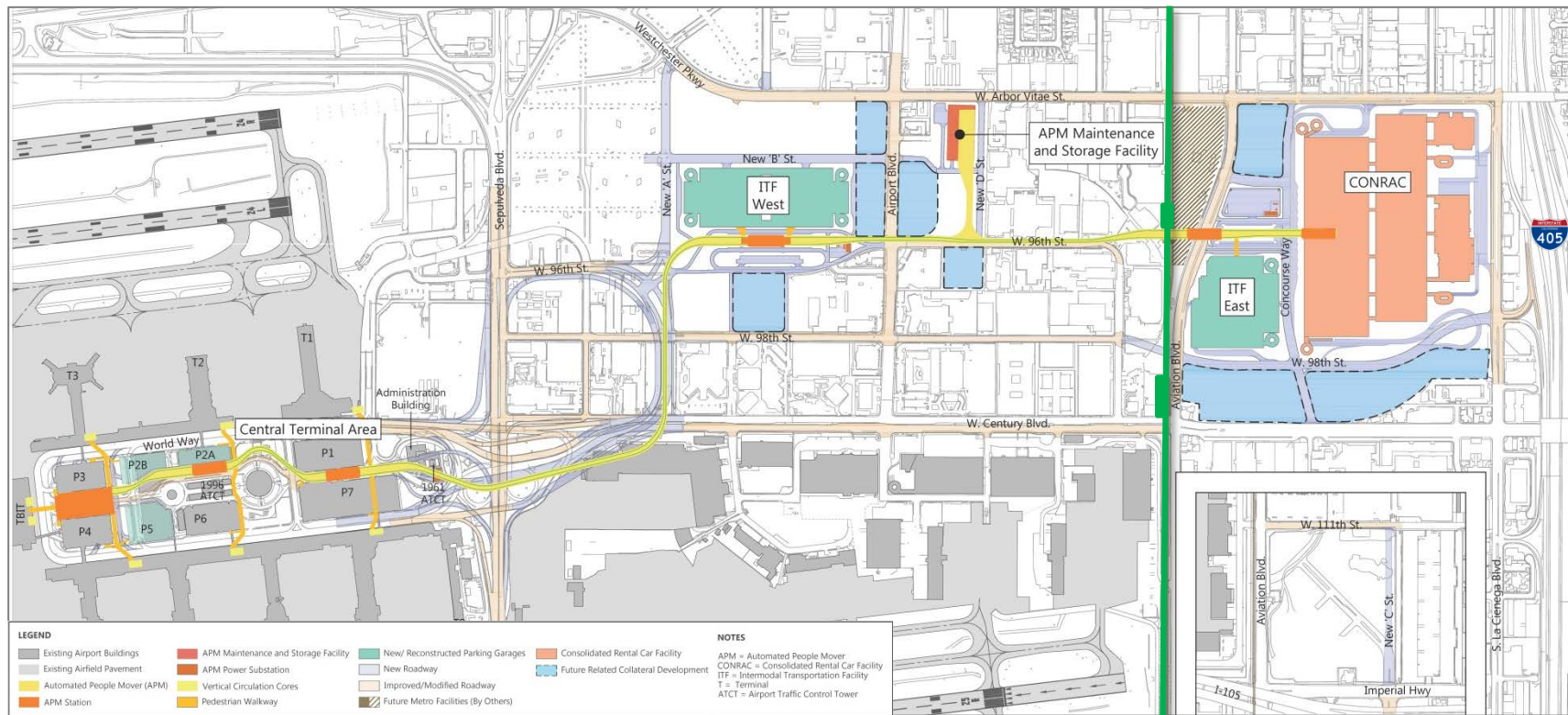


- Over 74 Million passengers in 2015
- LAX projected to reach approximately 80 Million in 2016
 - Over 20 Million international passengers
 - 696 daily nonstop flights to U.S. cities
 - 1,181 weekly international nonstop departures to 72 cities in 38 countries on 58 commercial passenger air carriers
 - Average 1,800 daily aircraft movements
- Over 2 Million tons of air cargo annually
- \$8.5 Billion Capital Investment program
- \$5 Billion projected for future airport transportation access program

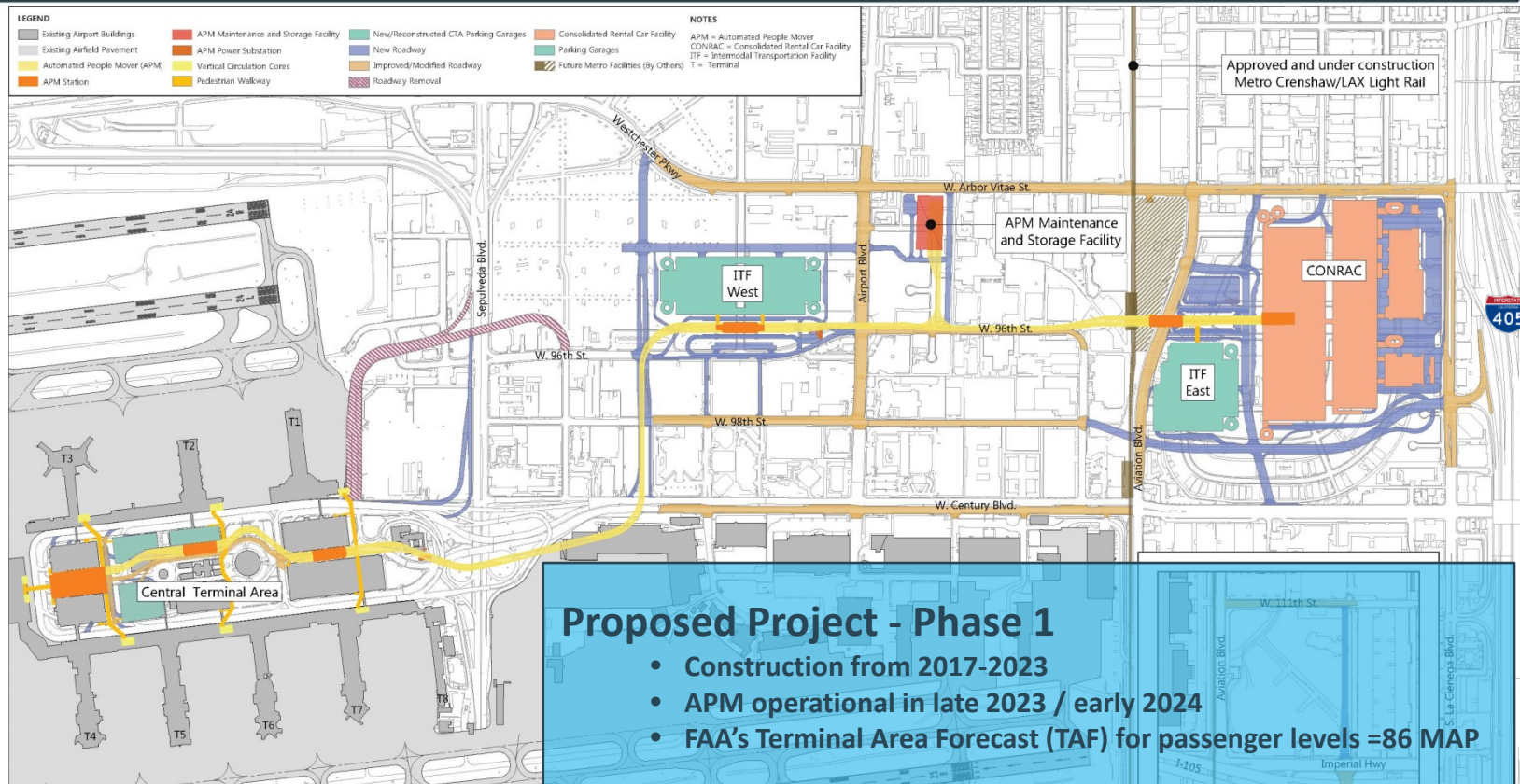
Landside Access Modernization Program



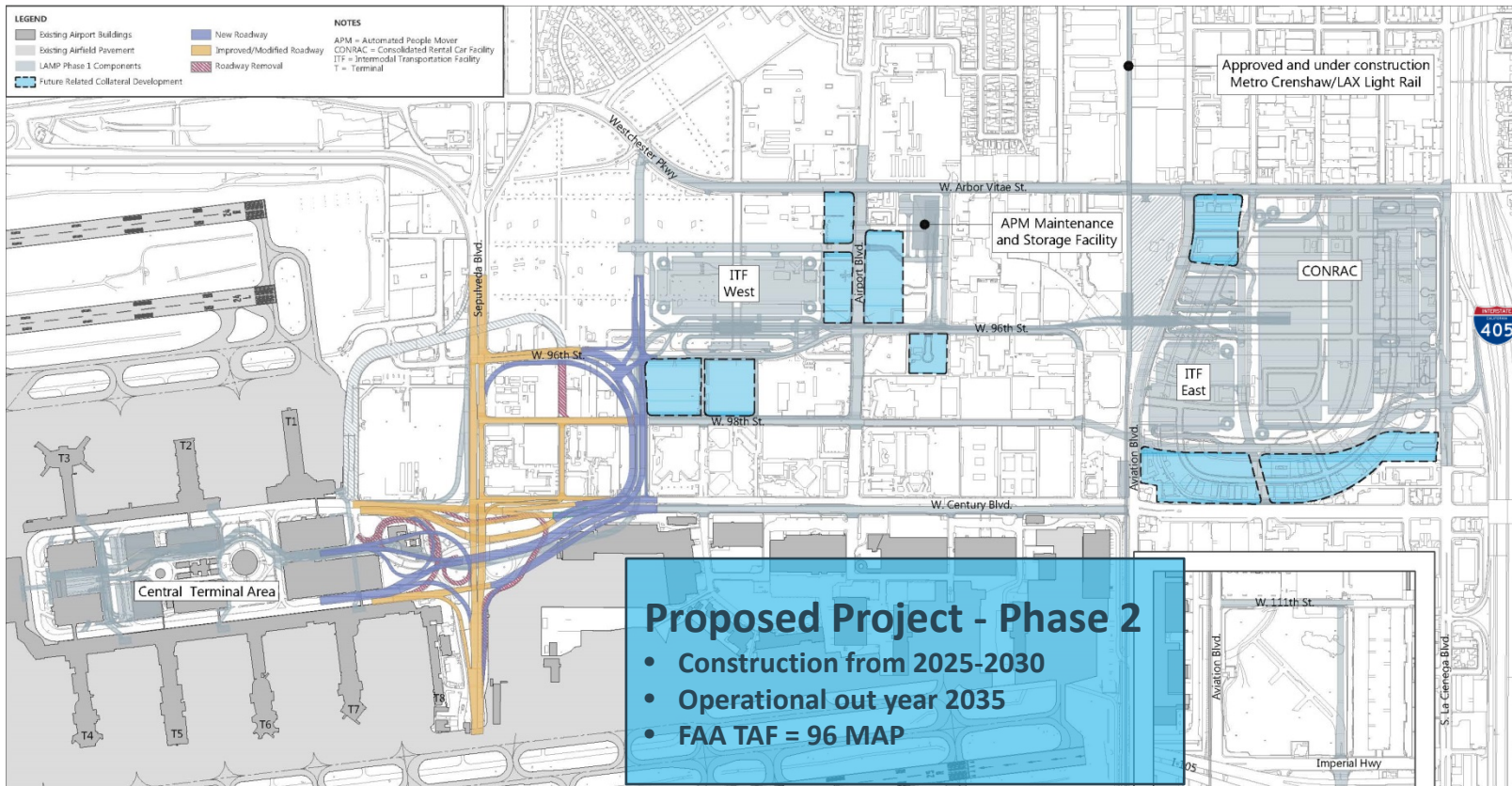
Ultimate LAMP Project



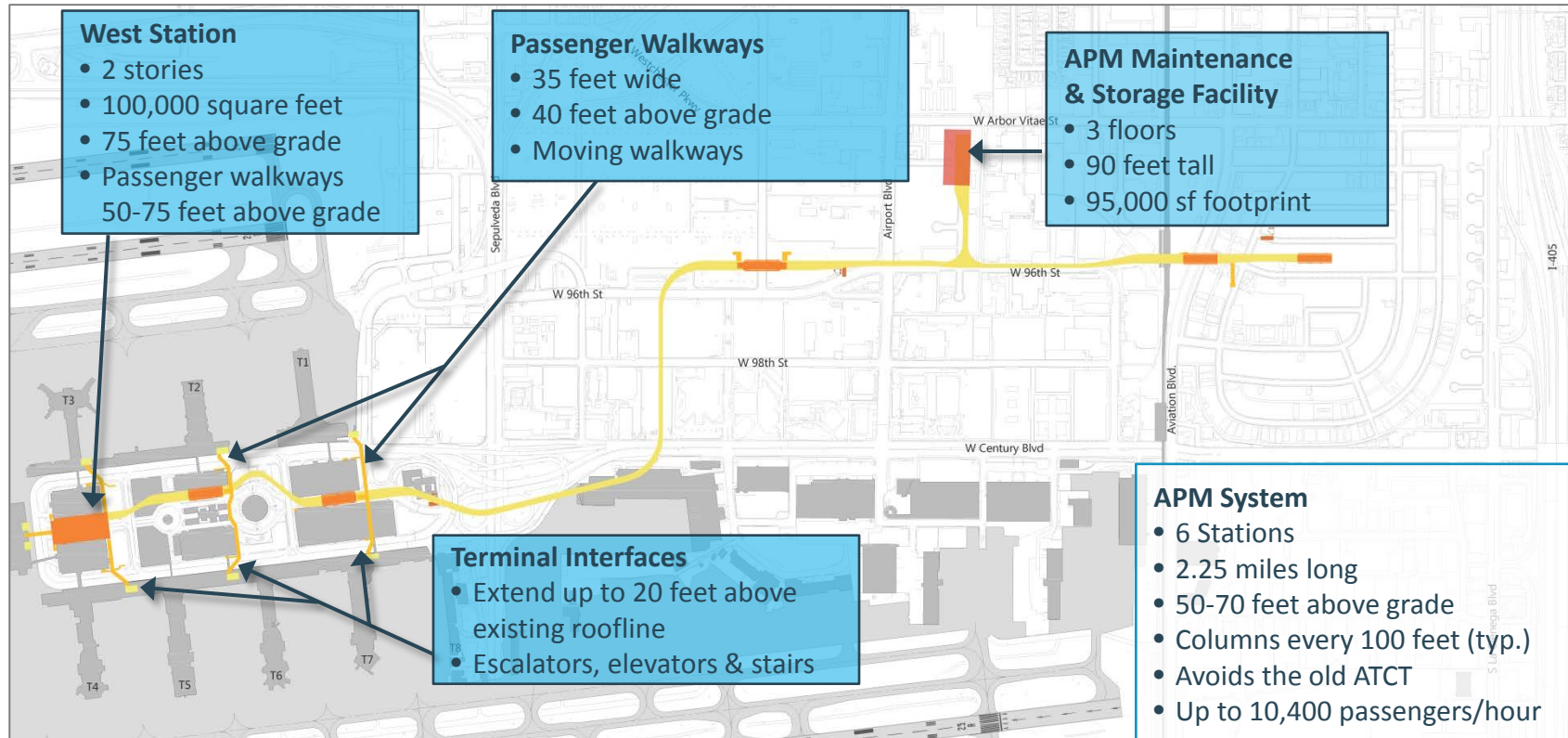
Project – Phase 1



Project – Phase 2



Automated People Mover (APM)



APM Within the CTA

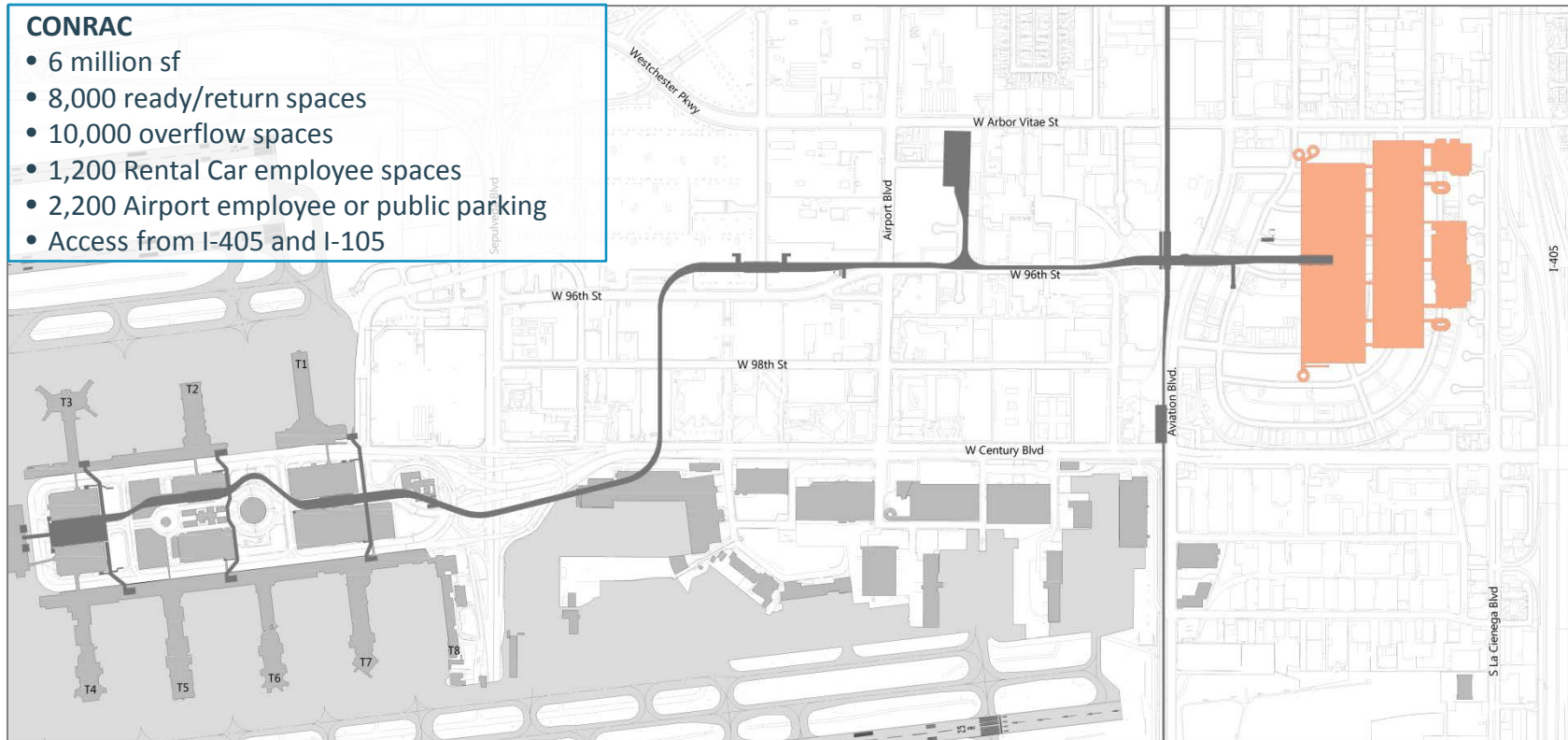


Consolidated Rental Car Facility



CONRAC

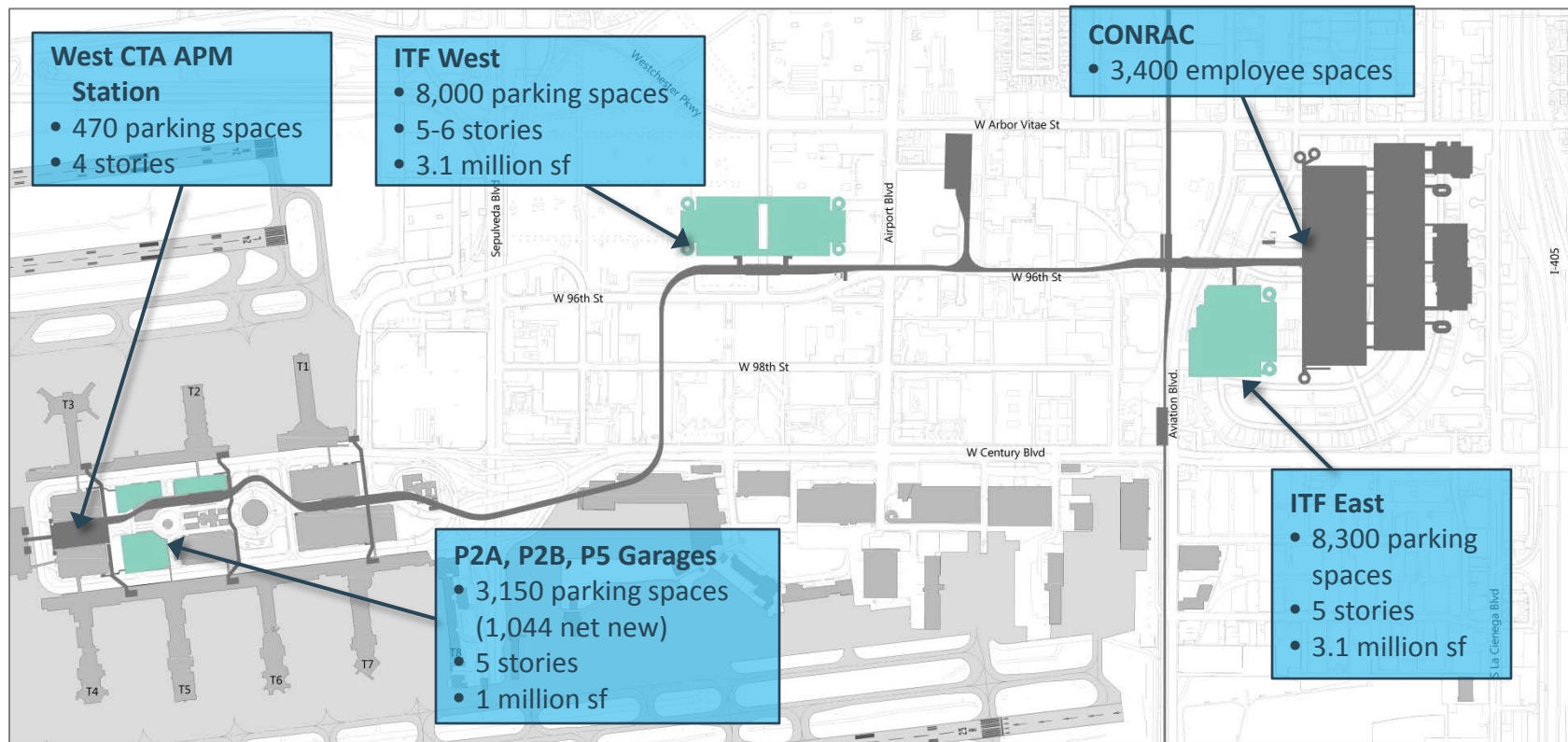
- 6 million sf
- 8,000 ready/return spaces
- 10,000 overflow spaces
- 1,200 Rental Car employee spaces
- 2,200 Airport employee or public parking
- Access from I-405 and I-105



CONRAC Conceptual



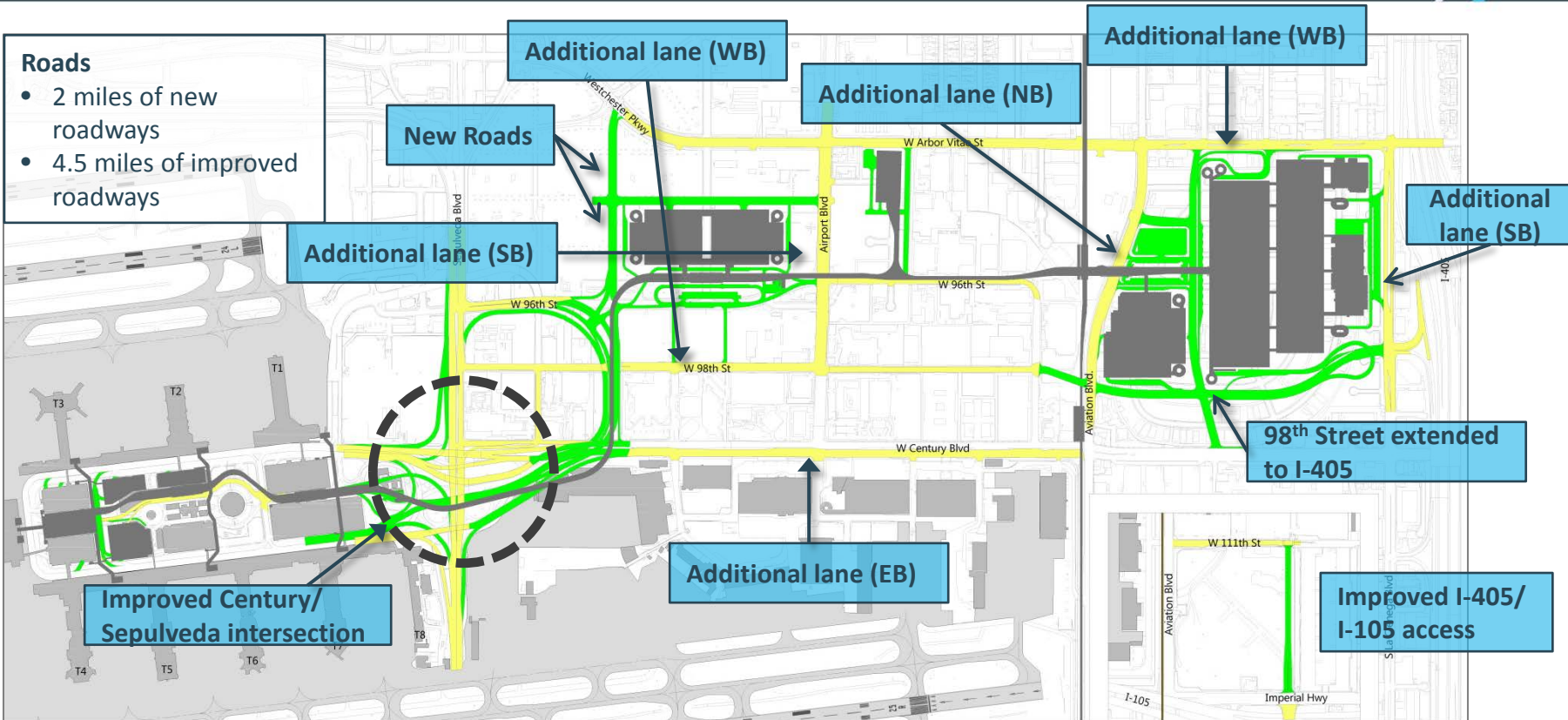
ITFs, Public and Employee Parking



ITF Conceptual



Roadway Improvements

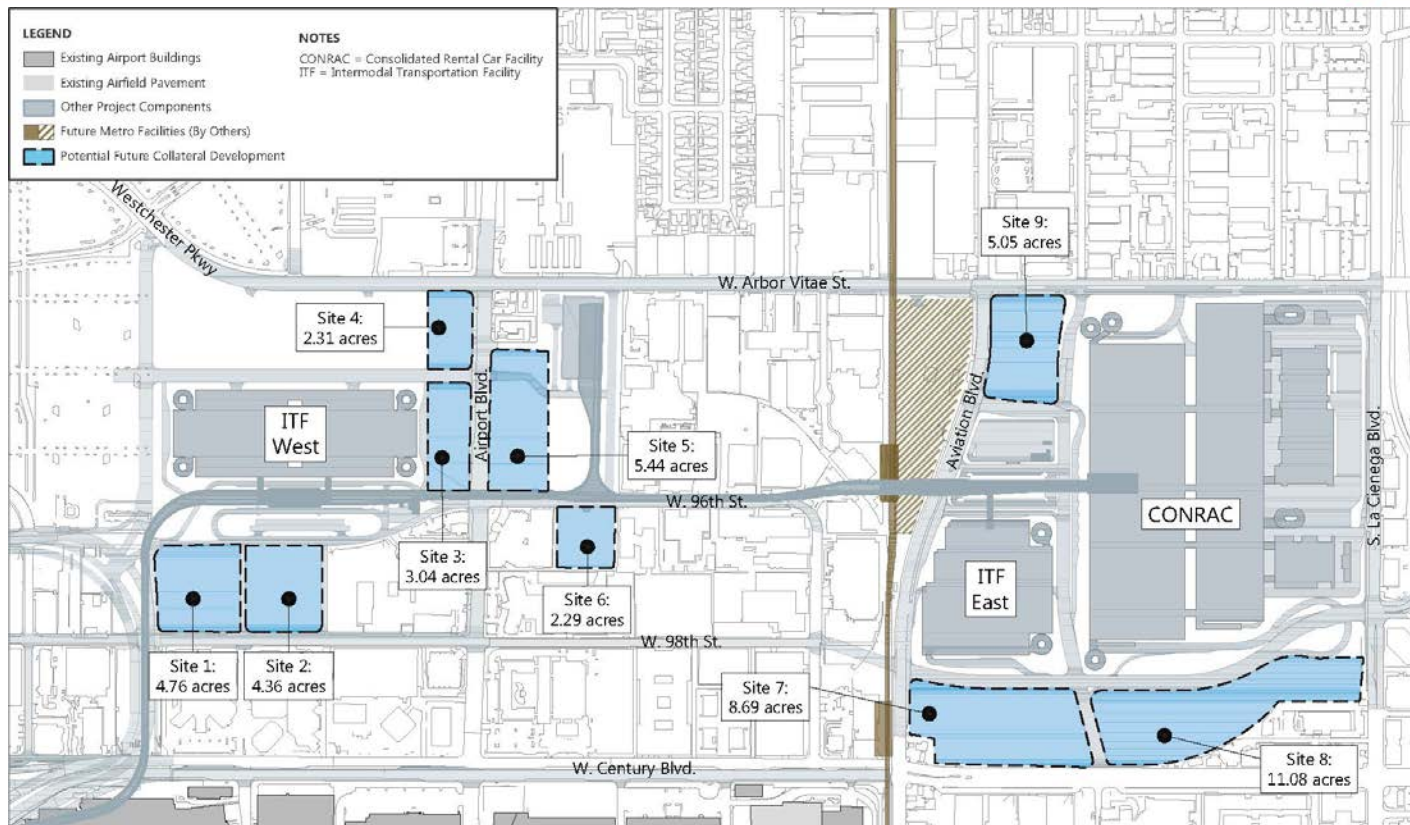


Phase 2 Program – Potential Future Related Development

Goals

- Downzone parcels
- Minimize regional trips
- Capture internal trips/ pedestrians
- Revitalize BID
- Enhance airport visitor experience

LAWA has no definitive plans today; but we are studying at a program level in the EIR.





LAWA APM to Connect to Metro's Airport–Metro Connector Station

Airport Metro Connector Project*



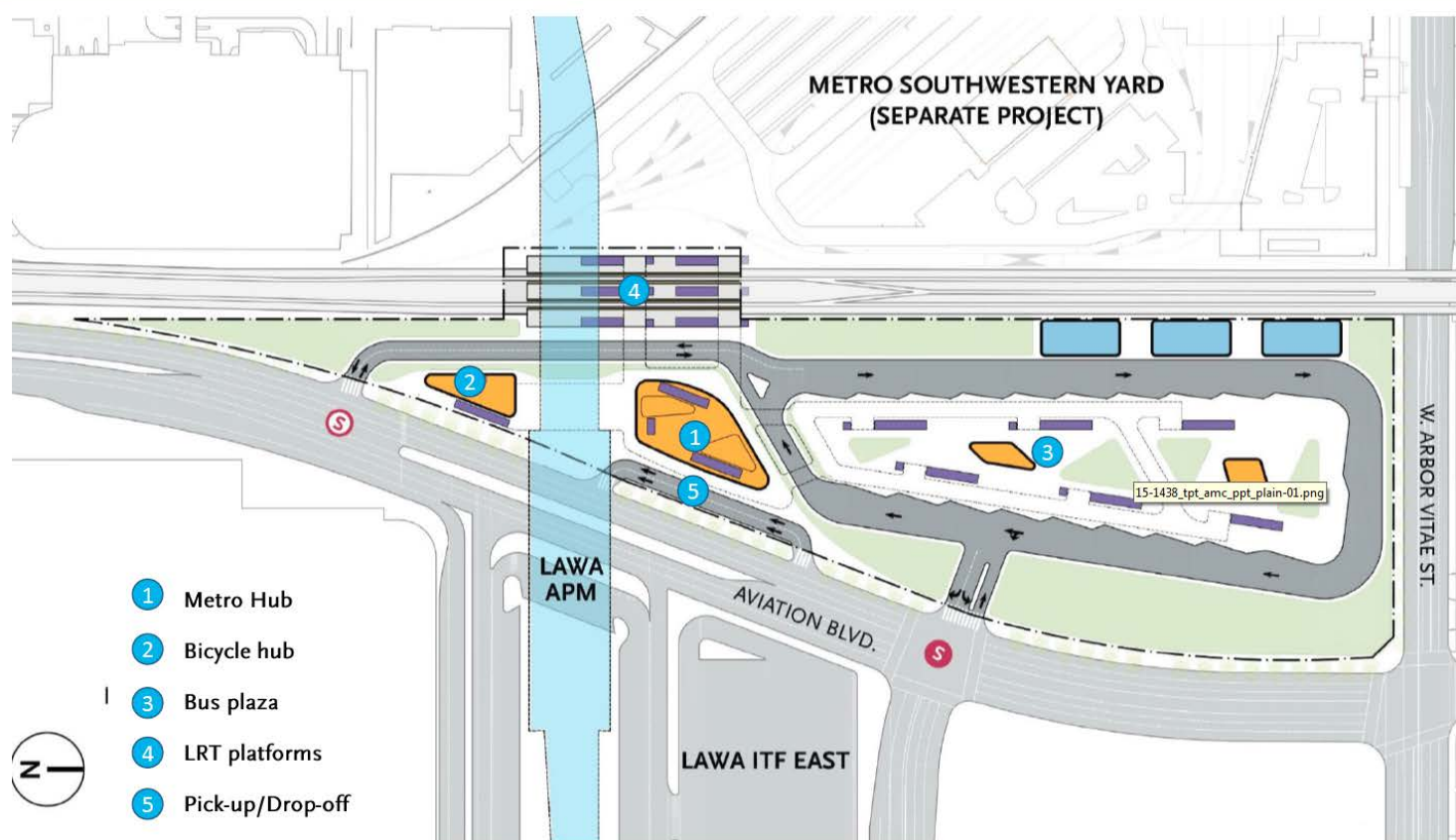
Metro



CONNECTINGLAX

* Planned by Metro as a separate and independent project

AMC+APM



AMC+APM Cross Section



LAWA's APM STATION

METRO HUB

Aviation Blvd.

LRT PLATFORMS

Two stylized airplane silhouettes are positioned on the left side of the slide. One is a light blue outline, and the other is a solid bright blue. They are angled upwards and to the right, overlapping each other.

CEQA Environmental Impact Analysis

Environmental Resources



Resource Categories Analyzed

Aesthetics	Land Use and Planning
Air Quality	Noise and Vibration
Biological Resources	Population and Housing
Cultural (Historic) Resources	Public Services
Greenhouse Gas Emissions	Transportation/Traffic
Hazards and Hazardous Materials	Utilities and Service Systems
Hydrology and Water Quality	

Aesthetics & Cultural Resources



Threshold	Construction	Project	Program	Cumulative
Aesthetics – Visual Character	Less than Significant	Significant	Less than Significant	Significant
Cultural – Historic Resources	Less than Significant	Significant	Less than Significant	Significant

Mitigation Measures

- Preservation of Historic Resources: Theme Building and 1961 Air Traffic Control Tower
- Design Guidelines to Protect the Historic Integrity of the Theme Building



LAX Design Guidelines



Columns

- Placement
- Number
- Design
- Materials/Color

Guideway

- Thickness
- Design
- Materials/Color

Station

- Design
- Materials/Color

Pedestrian Walkways

- Design
- Materials/Color



Design – APM Station Examples



LAX DESIGN GUIDELINES

Design – Pedestrian Bridge Examples



LAX DESIGN GUIDELINES



Air Quality , GHG & Human Health Risk



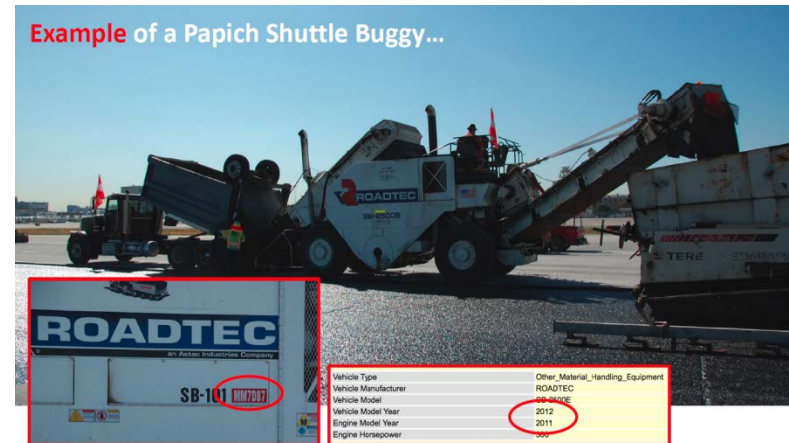
- Coordinated analysis methodology with SCAQMD.
 - All Criteria Pollutants (VOC, NO_x, CO, PM_{2.5}, PM₁₀) , Human Health Risk, and Green House Gas analyzed
- Air Quality
 - LAMP Project Phase 1 and Phase 2:
 - No Significant Impacts Identified for Project Phase 1 and Phase 2 Construction and Operations, **except for PM₁₀** Emissions Driven by Fugitive Operational/Traffic Road Dust
 - 2035 Program Collateral Development:
 - LAWA does not have current definitive plans for development
 - Will conduct project-level EIR and analyze construction when details
 - Significant air quality impacts for Program Operations and Construction
- **No Anticipated Human Health Risk** significant impact triggered by LAMP Project or Program
- **Green House Gas** emissions quantifiably reduced as part of LAMP, but EIR conservatively discloses significant impact because LAMP does not achieve 1990 levels by 2030
- **Significant** air quality and GHG impacts during construction

AQ Mitigation Measures – Clean Construction

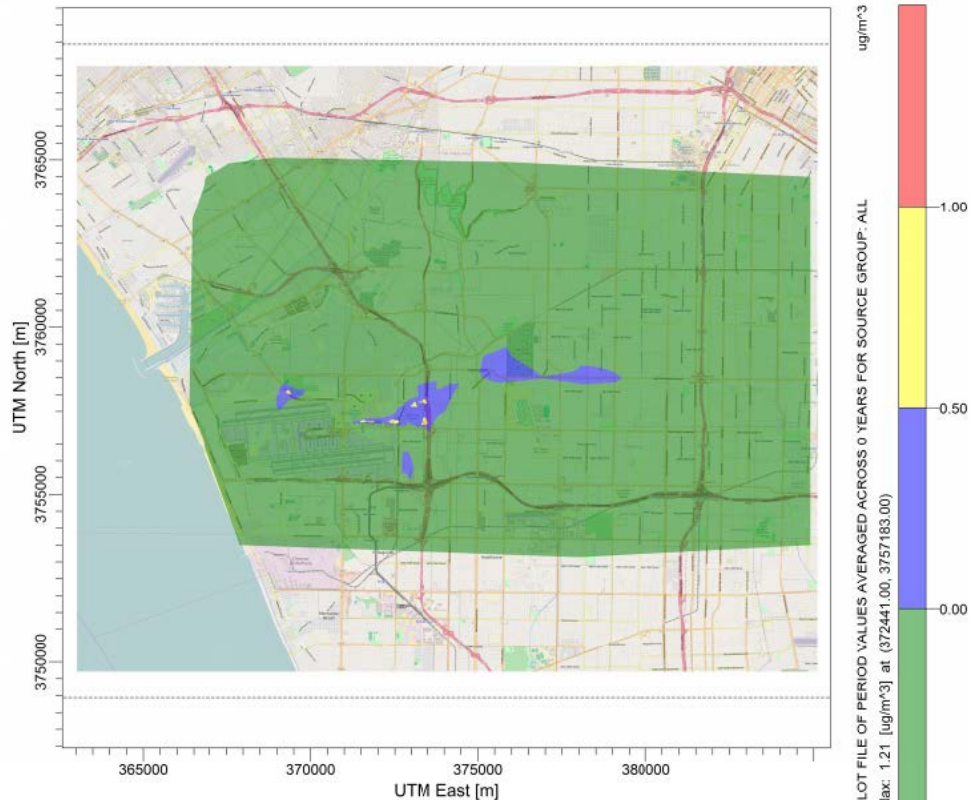


- **On-Road Emissions Reduction**
 - 2010 Haul Truck Model Year Commitment
 - Minimizing worker vehicle emissions (e.g., on-site lunch trucks, off-peak commute)
- **On-Site Construction Equipment Emissions Reduction**
 - Clean Equipment and Best Available Emission Control Devices on Diesel Equipment
 - Ultra-low sulfur diesel required
 - Idling restrictions on diesel equipment
 - Utilize specific combination of electric and portable diesel/gasoline generators
 - Proper maintenance of construction equipment required
 - Tampering of construction equipment prohibited
- **Fugitive Dust Control**
 - Rule 403 compliance (e.g., watering 3 times daily)
 - Sign posted with dust complaint contact information
 - Require corrective action on dust complaints within 24 hours
 - Paving construction access roads at least 100 feet onto the site required
 - Laying building pads soon after grading
- **Independent Third Party Monitor**

Example of a Papich Shuttle Buggy...



LAX LAMP – Operational PM10 Impact - 2035



With Project Increment is greater than Threshold

With Project Increment is less than Threshold

With Project Increment is less than $\frac{1}{2}$ of Threshold

With Project is less than Without Project

LAX LAMP – Operational PM10 Impact – 2035 Focus on Impacted Areas



ug/m³

1.00

0.50

0.00

-3.00

PLOT FILE OF PERIOD VALUES AVERAGED ACROSS 0 YEARS FOR SOURCE GROUP: ALL
Max: 1.21 [ug/m³] at (372441.00, 3757183.00)

With Project
Increment is greater
than Threshold

With Project
Increment is less
than Threshold

With Project
Increment is less
than ½ of Threshold

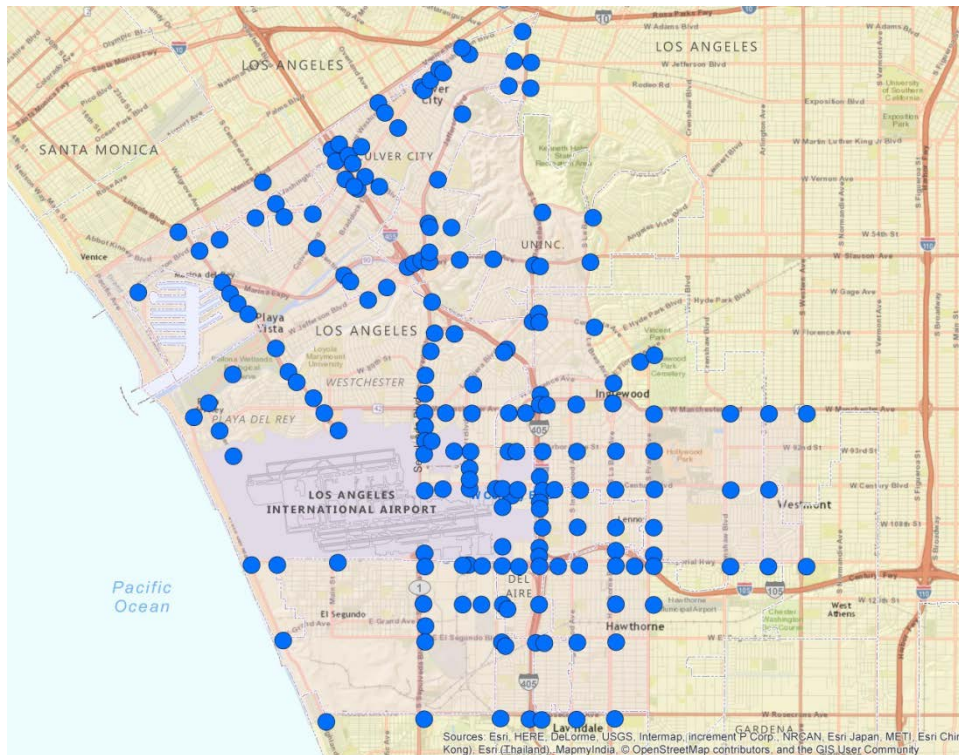
With Project is less
than Without
Project

Tier 4 Equipment



Traffic Study Area

- 8 Jurisdictions
- 183 Intersections studied
 - 23 Freeway Segments
 - 26 ramp terminals
- Significant Impacts After Mitigation:
 - 2024
 - AM – 0 Impacts
 - PM – 0 Significant Impact
 - 2035
 - AM – 1 Significant Impact
 - PM – 1 Significant Impact



Significantly Impacted Intersections Before Mitigation



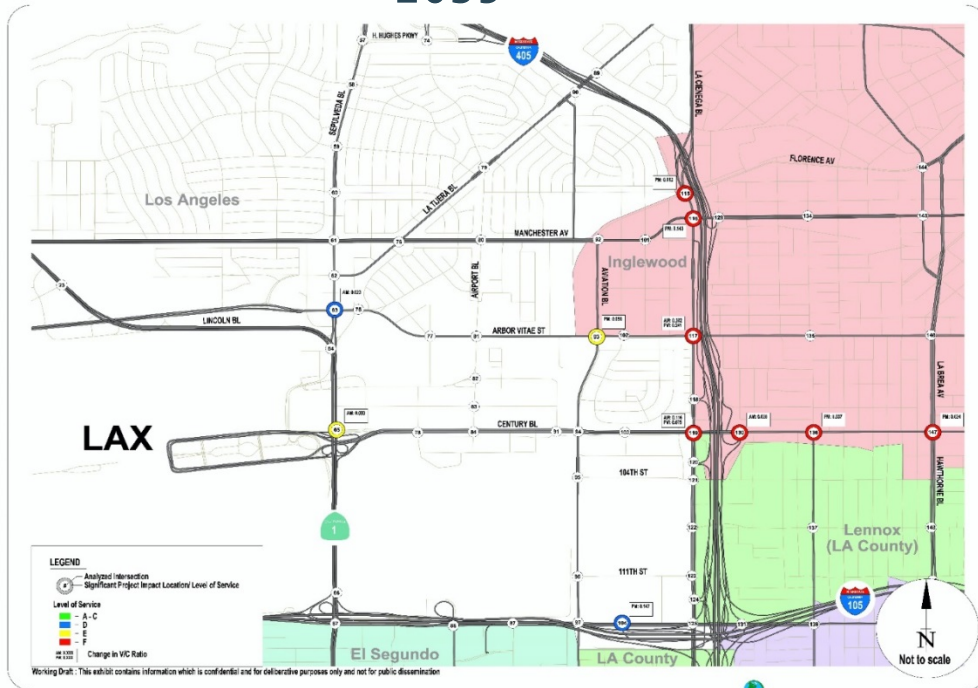
2024



LAWA - GTP EIR/EA FUTURE (2024) WITH PROJECT CONDITIONS SIGNIFICANT IMPACT SUMMARY

RAJU Associates, Inc.

2035



LAWA - GTP EIR/EA FUTURE (2035) WITH PROJECT (WITH COLLATERAL DEVELOPMENT) CONDITIONS SIGNIFICANT IMPACT SUMMARY

RAJU Associates, Inc.

Summary of Proposed Traffic Mitigation

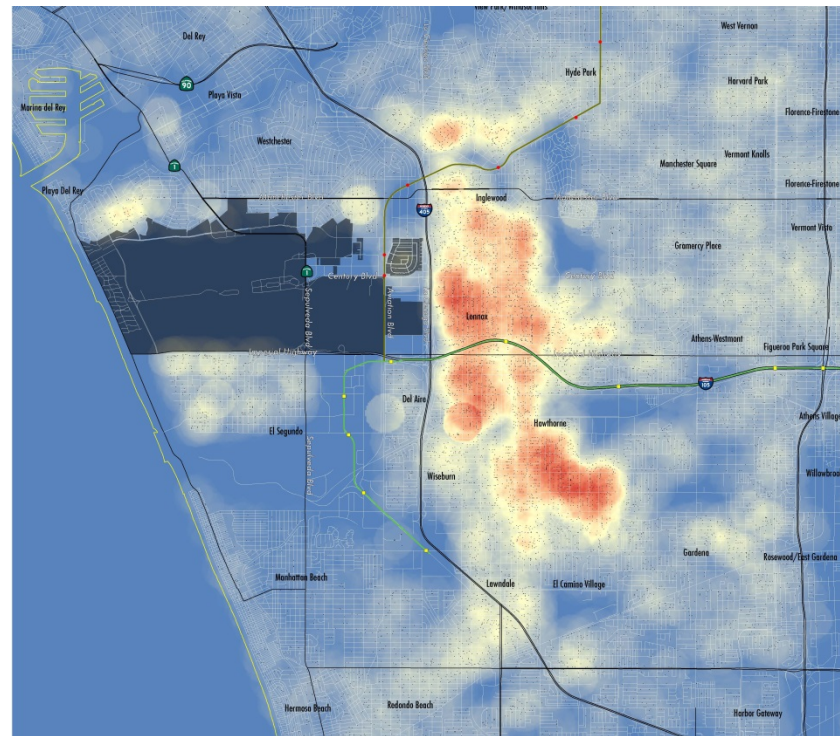


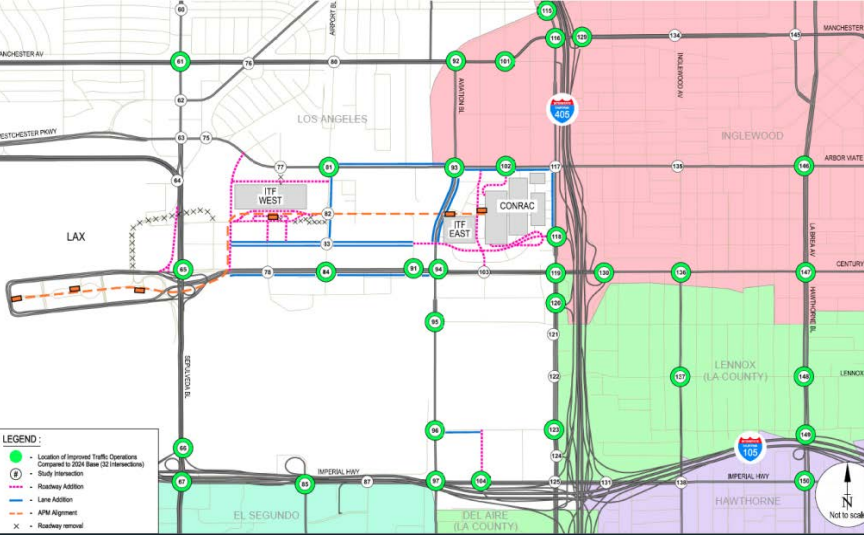
- Travel Demand Management (TDM) Program
- Intelligent Transportation Systems (ITS) Improvements
- Physical Intersection Improvements
 - Sepulveda Boulevard & Century Boulevard
 - Aviation Boulevard & Arbor Vitae Street
 - I-105 Freeway Ramps (east of Aviation Boulevard) & Imperial Highway
 - La Cienega Boulevard & Florence Avenue
 - La Cienega Boulevard & Manchester Boulevard
 - La Cienega Boulevard & Arbor Vitae Street
 - La Cienega Boulevard & Century Boulevard
 - Inglewood Avenue & Century Boulevard
 - Century/La Brea-Hawthorne
- 405 auxiliary lane/3rd northbound lane on La Cienega
- Fair Share contribution along Caltrans' facilities
- Construction Traffic Project Task Force – coordinate deliveries, monitor traffic conditions, advise motorists about detours, and coordinate vehicle, pedestrian, transit, emergency access throughout construction

Travel Demand Management Program at LAX

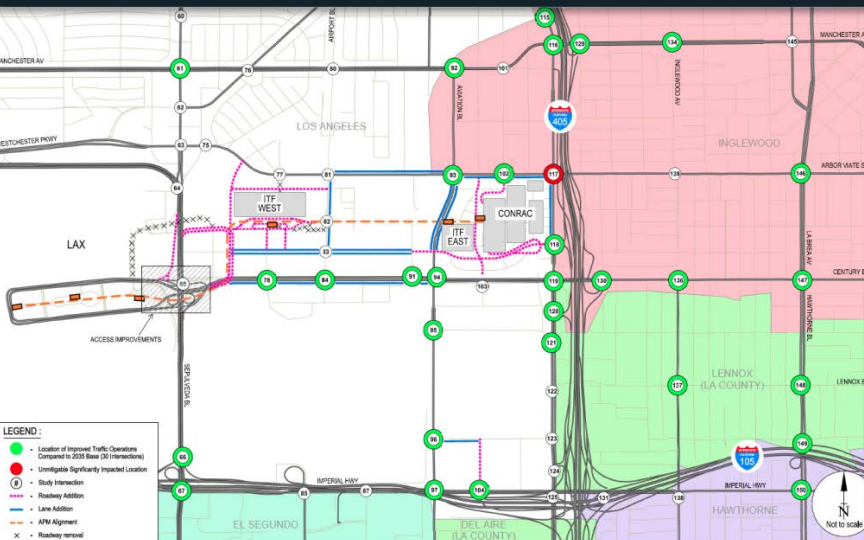
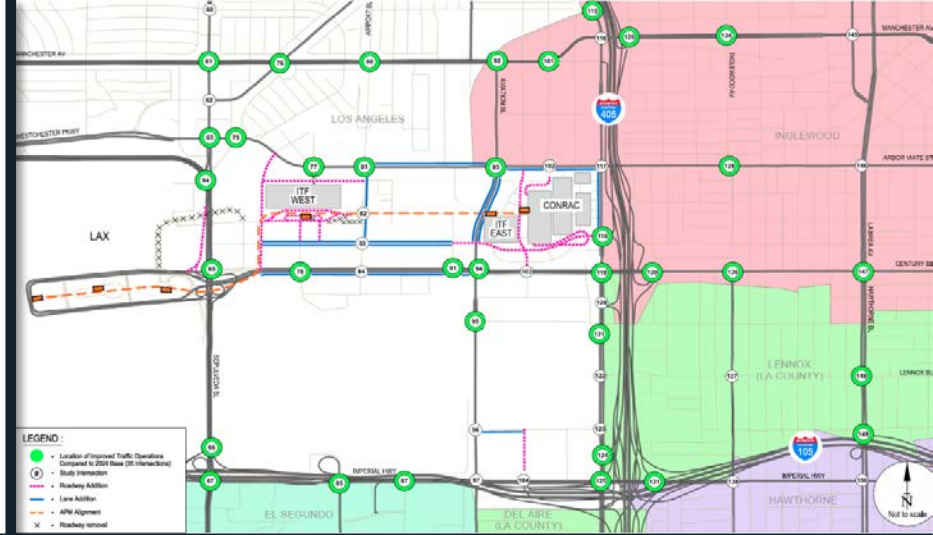


- LAX Employees
 - 43,498 validated badged employees
 - 31% live within 5 miles/53% within 10 miles of LAX
 - High concentration within 1 to 3 miles, located within SB 535 *Disadvantaged Communities*
- LAX Transportation Management Association
 - Home-to-work transportation alternatives
 - Enhanced rideshare/carpool/vanpool program
 - Incentives transit pass program
 - Bicycle access program
 - Coordination with adjacent TMAs

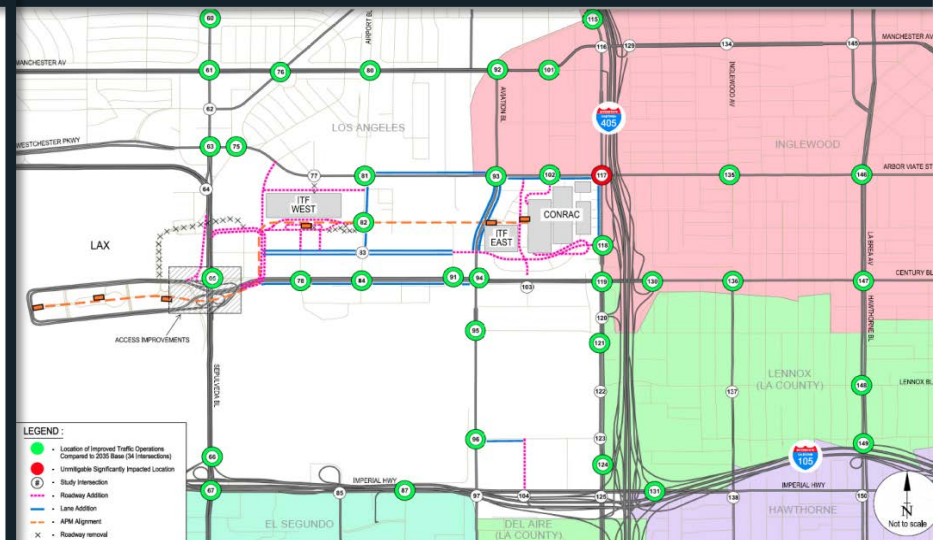




2024
PM



2035
PM





LAMP Sustainability Measures

LAMP Sustainability Highlights



Elements & Guidelines

- Minimum standards exceed Los Angeles Green Building Standard Codes for Tiers 1 & 2
- Exceed CA 2008 energy efficiency standards by 15%
- Reduce CA portable water use requirements by 30%
- Comply with Low Impact Development
- Xeriscaping



Facility Highlights

ConRAC

- LEED Silver Goal
- 10% parking for electric vehicle charging stations & preferred parking for low emitting vehicles

APM Maintenance Facility

- Cool roof materials to reduced heat island impacts

Intermodal Transportation Facility

- Bike parking & shower facilities
- Preferred parking for low-emitting & fuel-efficient vehicles
- 10% electric vehicle charging stations
- On-site solar (as applicable)



Community Outreach

Outreach Efforts



- Extensive stakeholder and public involvement:
 - Presentations to business, community, and special interest groups
 - Briefings and meetings with affected jurisdictions to identify concerns
 - Project website– *ConnectingLAX.com*
- Launched social media engagement – *facebook.com/connectinglax*

Communities/ Community Groups		Business/Special Interest Groups	
<ul style="list-style-type: none"> • City of El Segundo • City of Hawthorne • City of Inglewood • City of Lennox • Culver City • Inglewood Rotary • Los Angeles Economic Development Corporation • Air Quality Management District 	<ul style="list-style-type: none"> • South Bay Cities COG • Westchester/Playa NC • Westchester Rotary • Westside Regional Alliance of Councils • Southern California Association of Governments 	<ul style="list-style-type: none"> • BizFed Transportation Committee • Central City Association • El Segundo Chamber of Commerce • Gateway to LAX BID • LA Area Chamber of Commerce • LA Business Journal • LA Conservancy • LAX Area Advisory Committee • Valley Industry & Commerce Association 	<ul style="list-style-type: none"> • LAX Coastal Area Chamber of Commerce • Los Angeles Business Council • San Gabriel Valley Economic Partnership • Sierra Club Transportation Committee • South Bay Chamber of Commerce • Westchester Town Center BID



Approval Schedule & Next Steps

Status Update / Timeline



- **CEQA: EIR Timeline**

- Release of Draft EIR: September 15
- Public Comment Period: October 31
 - Public Workshops Scheduled:
 - October 15, Senior Center Westchester Recreation Center, 9:30AM–12:30 PM
 - October 19, Flight Path Learning Center, 6PM–8:30 PM
- Final EIR: January 2017
- Final City Council approval: June 2017

- **NEPA: EA process underway**

- EA Notice – June 9, 2016
- EA Scoping Meeting– June 22, 2016
- Secure FAA Approval– 4th Quarter 2017

Thank You!



Additional Information:
www.connectinglax.com
Phone: 800.919.3766

